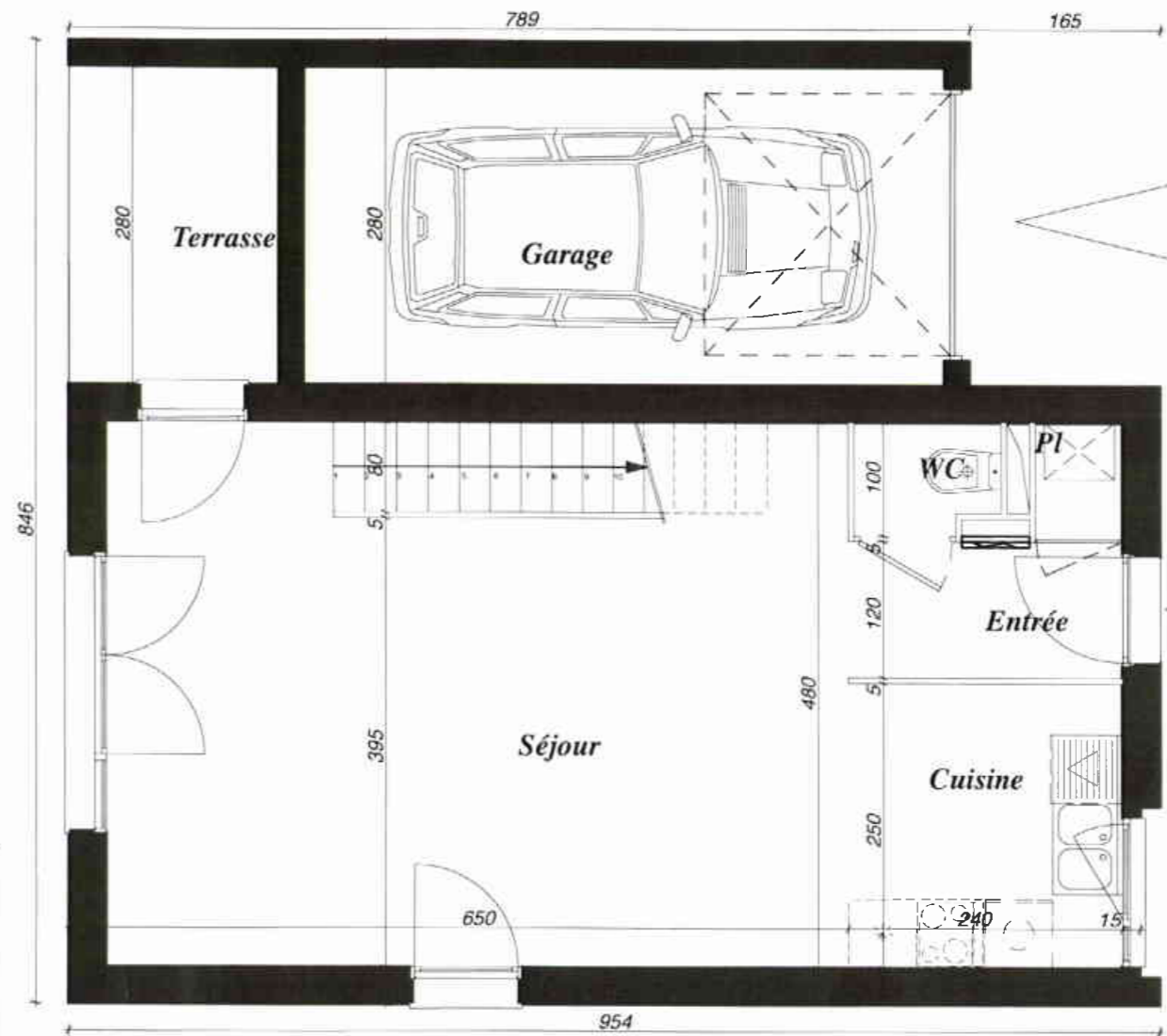




Villa n°08



T3
Surface habitable
69,10m²

Entrée + Pl	3,67
Séjour	28,45
Cuisine	6,00
WC	1,22
Chambre 1	10,56
Chambre 2	12,45
Salle de bains	4,11
Dgt	2,64
Garage	15,68
Terrasse	5,18
Jardin	233

